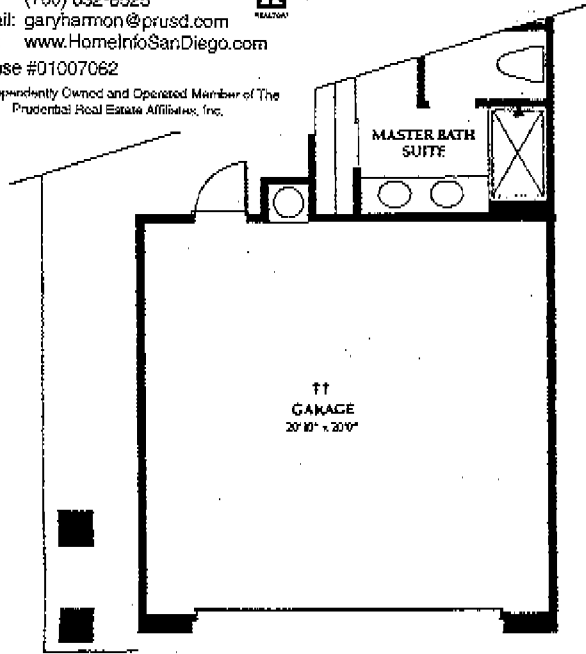
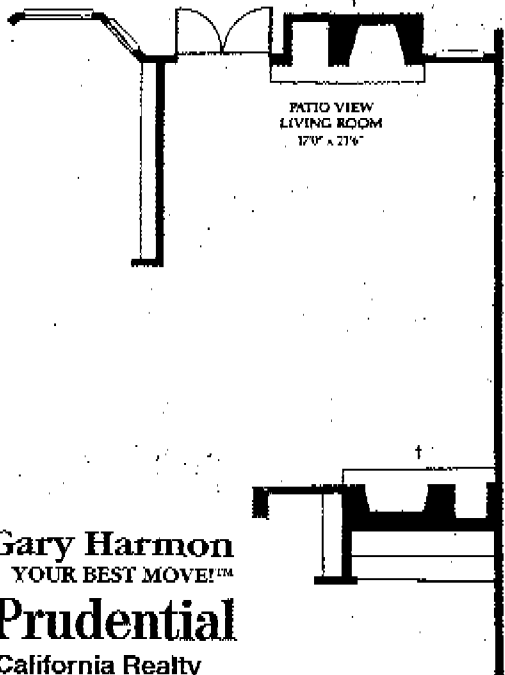




Office: (760) 745-1220
 Fax: (760) 632-8525
 E-Mail: garyharmon@prusd.com
 Web: www.HomeInfoSanDiego.com
 License #01007062

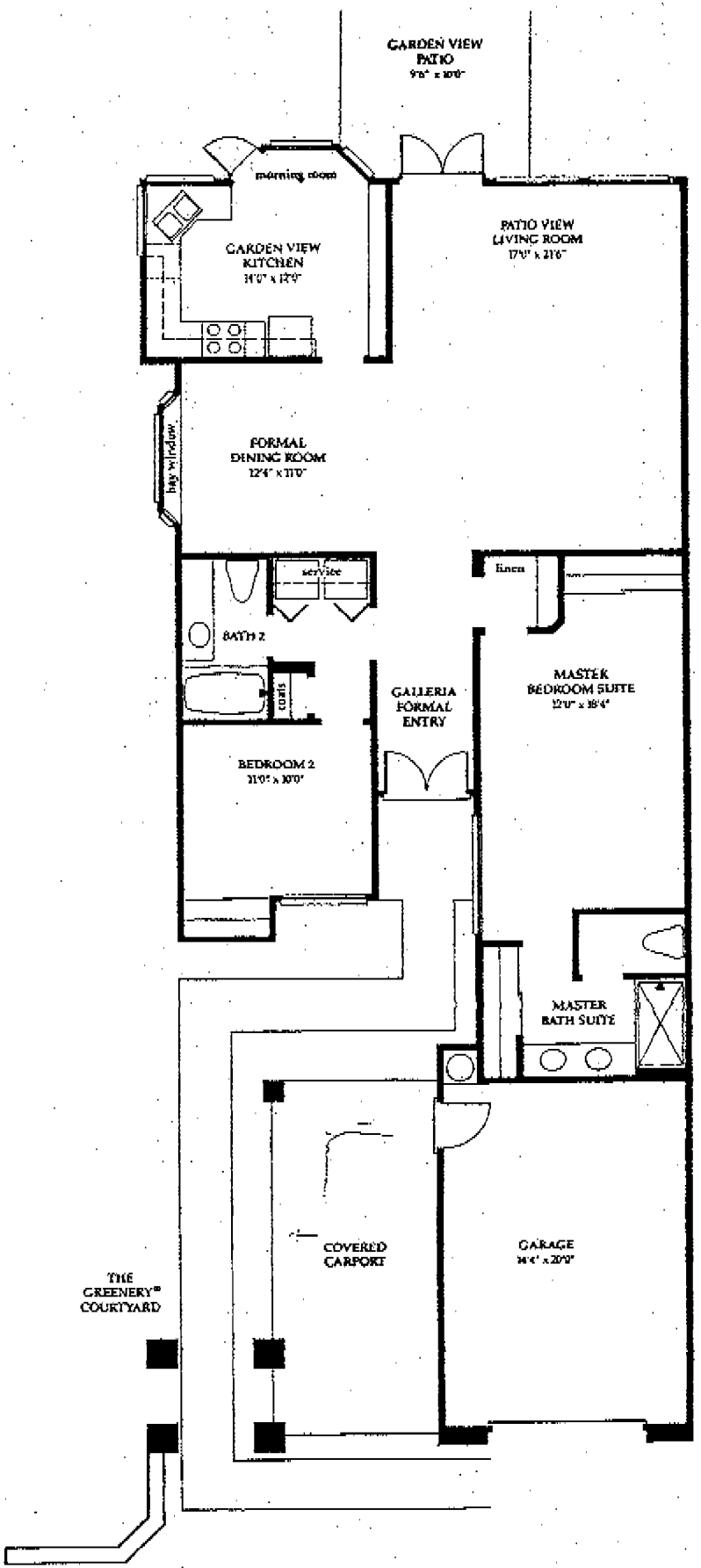


An Independently Owned and Operated Member of The Prudential Real Estate Affiliates, Inc.



†Optional Porto Cervo inspired fireplace with log box.
 ††Optional two car garage available in lieu of covered carport (on some lots).

Architectural details, features and dimensions are approximate and subject to change without notice.



Athena
1426 Sq. Ft.